



Builders National  
**COOPERATIVE**

## Plan - TOWN3

From \$142,800  
plus land and site development



### Home Building **Simplified**

The TOWN3 plan offers an open floor plan with large dining room and flexible options such as entry-level bedroom/bathroom, full bath, and dual living spaces.

2,122 sqft

2 - 4 Bedrooms

Oversized garage, gourmet kitchen with 12-foot island, 370-square-foot family room, and dual sinks in master and second bath.

Owner's bath has dual sinks, spacious shower with ceramic tiling and separate water closet

Sales:

Mike Muren, Director of Operations for BNC

(301)524-4471

email: [MikeMuren@buildersnationalcooperative.com](mailto:MikeMuren@buildersnationalcooperative.com)

[www.BuildersNationalCooperative.com](http://www.BuildersNationalCooperative.com)

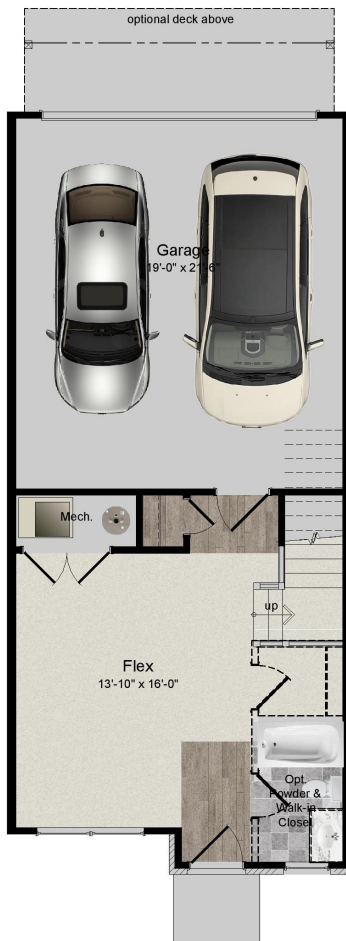




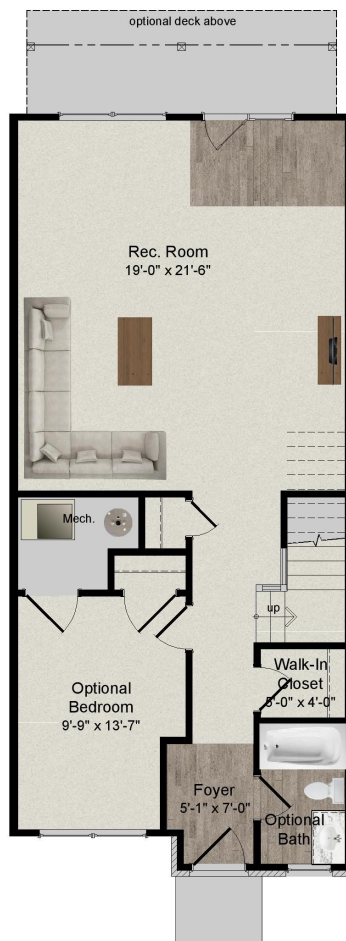
Builders National  
COOPERATIVE

# Plan - TOWN3

Additional options available



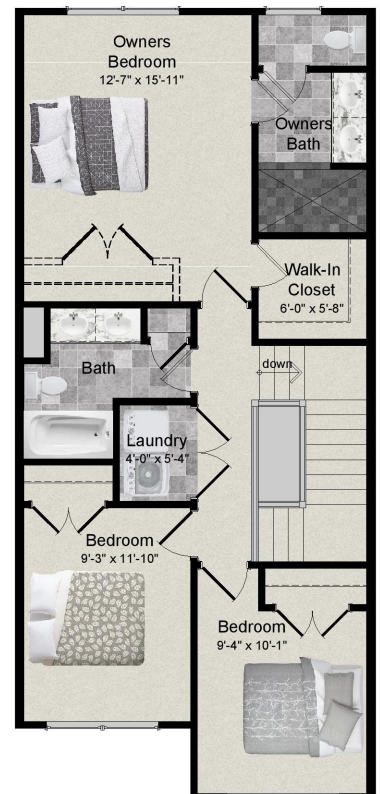
MODEL 3 LOWER LEVEL PLAN - ELEVATION 1, 2, & 3  
(INTEGRAL GARAGE)



MODEL 3 LOWER LEVEL PLAN - ELEVATION 1, 2, & 3



MODEL 3 MAIN LEVEL PLAN - ELEVATION 1, 2, & 3



MODEL 3 THIRD LEVEL PLAN - ELEVATION 1, 2, & 3

Sales:

Mike Muren, Director of Operations for BNC

(301)524-4471

email: [MikeMuren@buildersnationalcooperative.com](mailto:MikeMuren@buildersnationalcooperative.com)

[www.BuildersNationalCooperative.com](http://www.BuildersNationalCooperative.com)

