



Builders National
COOPERATIVE

Plan - TOWN2

From \$147,907

plus land and site development



Home Building Simplified

The TOWN2 plan is a grand three-story townhome with roof terrace that offers you two distinct living spaces. With a 12' kitchen island and open rail staircase, this home is impressive at any price point.

2,122 sqft

2 - 4 Bedrooms

Third-floor airy loft that opens to a 218-square-foot rooftop terrace, dual-floor living rooms, and spacious owner's bath with dual sinks.

Open stairway offering natural light, kitchen with island for 6 stools, walk-in pantry and optional detached garages.

Sales:

Mike Muren, Director of Operations for BNC

(301)524-4471

email: MikeMuren@buildersnationalcooperative.com

www.BuildersNationalCooperative.com

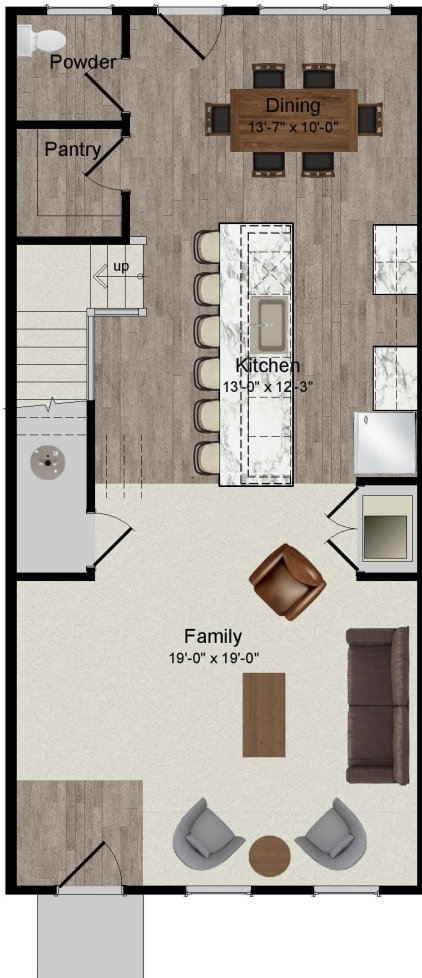




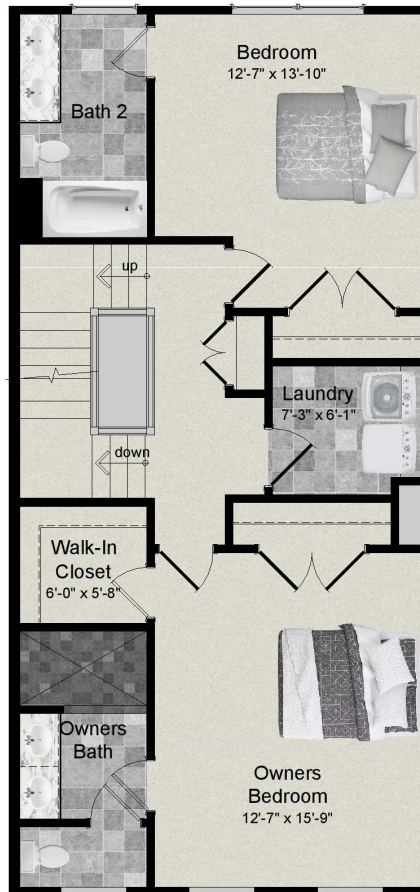
Builders National
COOPERATIVE

Plan - TOWN2

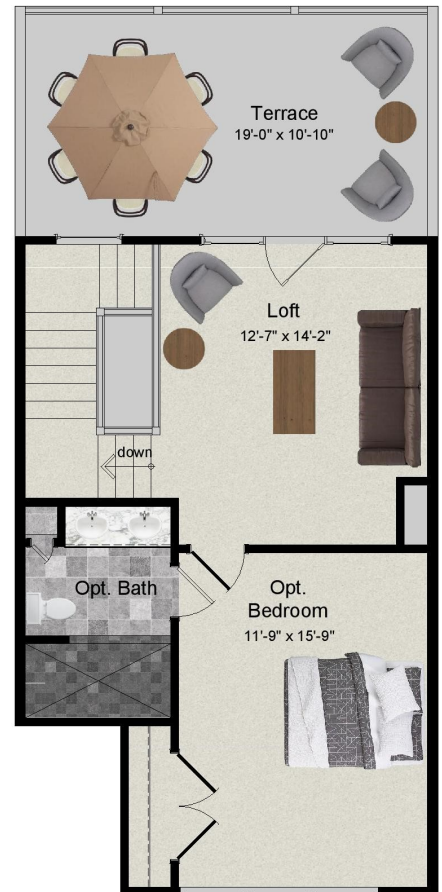
Additional options available



MODEL 1 - ELEVATION 1 - MAIN LEVEL
MODEL 2 - ELEVATION 1 - MAIN LEVEL - ELEVATION 1 & 2



MODEL 2 SECOND LEVEL - ELEVATION 1 & 2
(OPT 2 BEDROOM PLAN)



MODEL 2 THIRD LEVEL

Sales:

Mike Muren, Director of Operations for BNC

(301)524-4471

email: MikeMuren@buildersnationalcooperative.com

www.BuildersNationalCooperative.com

