



Builders National
COOPERATIVE

Plan - TOWN1

From \$102,900
plus land and site development



Home Building **Simplified**

The TOWN1 plan is an affordable two-story townhome inspired by the spaciousness of a single-family home including an open floor plan and luxury master suite.

1,613 to 1,672_{sqft}

2 - 3 Bedrooms

Owner's bath with dual sinks, spacious ceramic-tiled shower, and separate water closet.

Rear-load alley parking with backyard, open stairway full of natural light, gourmet kitchen with 12-foot island and walk-in pantry.

Sales:

Mike Muren, Director of Operations for BNC

(301)524-4471

email: MikeMuren@buildersnationalcooperative.com

www.BuildersNationalCooperative.com

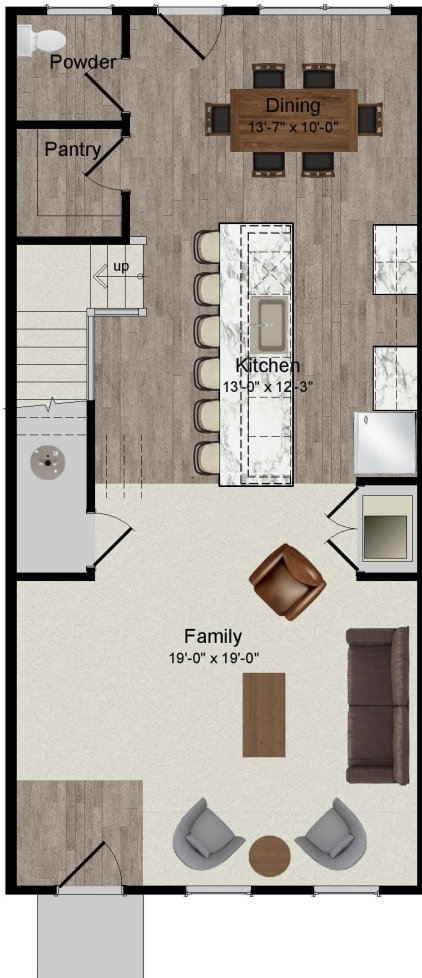




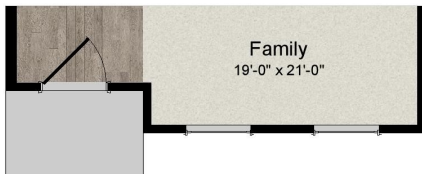
Builders National
COOPERATIVE

Plan - TOWN1

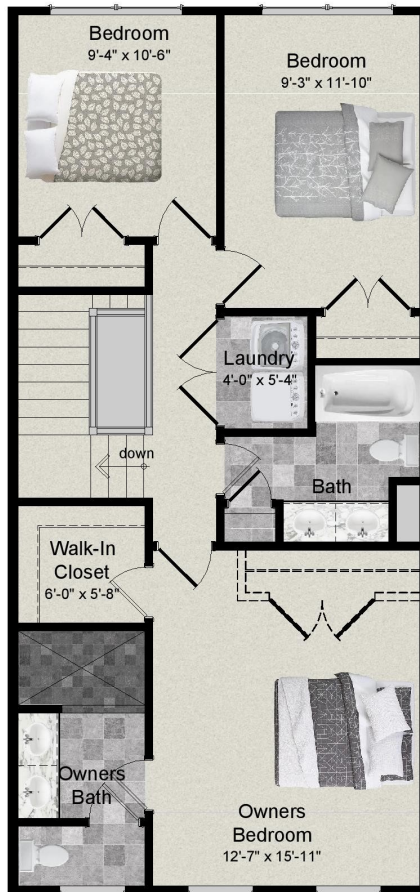
Additional options available



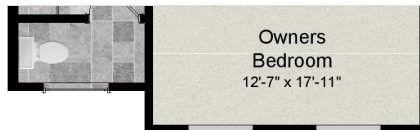
MODEL 1 - ELEVATION 1 - MAIN LEVEL
MODEL 2 - ELEVATION 1 - MAIN LEVEL - ELEVATION 1 & 2



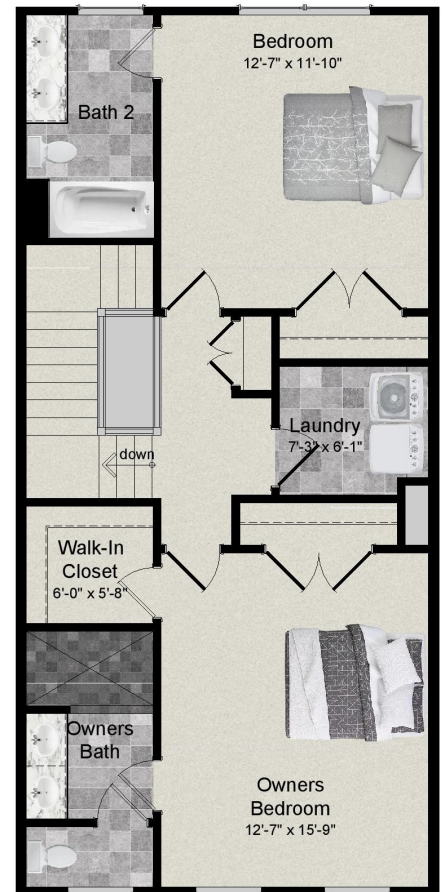
MODEL 1 MAIN LEVEL - ELEVATION 2 & 3



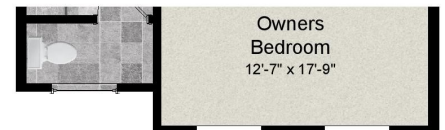
MODEL 1 SECOND LEVEL - ELEVATION 1



MODEL 1 SECOND LEVEL - ELEVATION 2&3



MODEL 1 SECOND LEVEL (OPT 2 BEDROOM PLAN) - ELEVATION 1



MODEL 1 SECOND LEVEL (OPT 2 BEDROOM PLAN) - ELEVATION 2&3

Sales:

Mike Muren, Director of Operations for BNC

(301)524-4471

email: MikeMuren@buildersnationalcooperative.com

www.BuildersNationalCooperative.com

