



Builders National
COOPERATIVE

Plan - ACL2

From \$232,700
plus land and site development

Arts & Crafts ELV



Craftsman ELV



Traditional ELV



Home Building Simplified

The ACL2 plan offers large room sizes and high end features throughout. This home's versatile options allow it to fit well on a rural lot or an urban infill lot, and everything in between.

2,694 to 6,394 sqft

4 - 6 Bedrooms

With 20+ structural options this home offers gourmet kitchen, deluxe bath and main level in-law suite options.

A huge front porch, dual staircases, built in benches and other standard features set this home apart from the rest.

Sales:

Mike Muren, Director of Operations for BNC

(301)524-4471

email: MikeMuren@buildersnationalcooperative.com

www.BuildersNationalCooperative.com

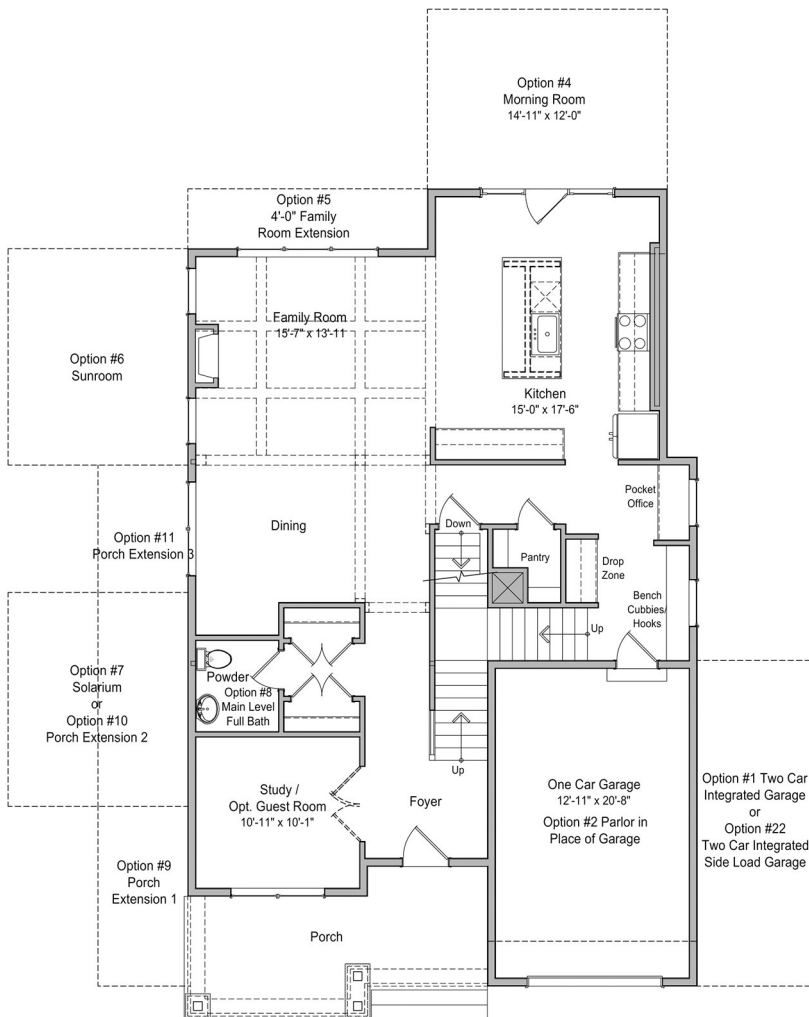




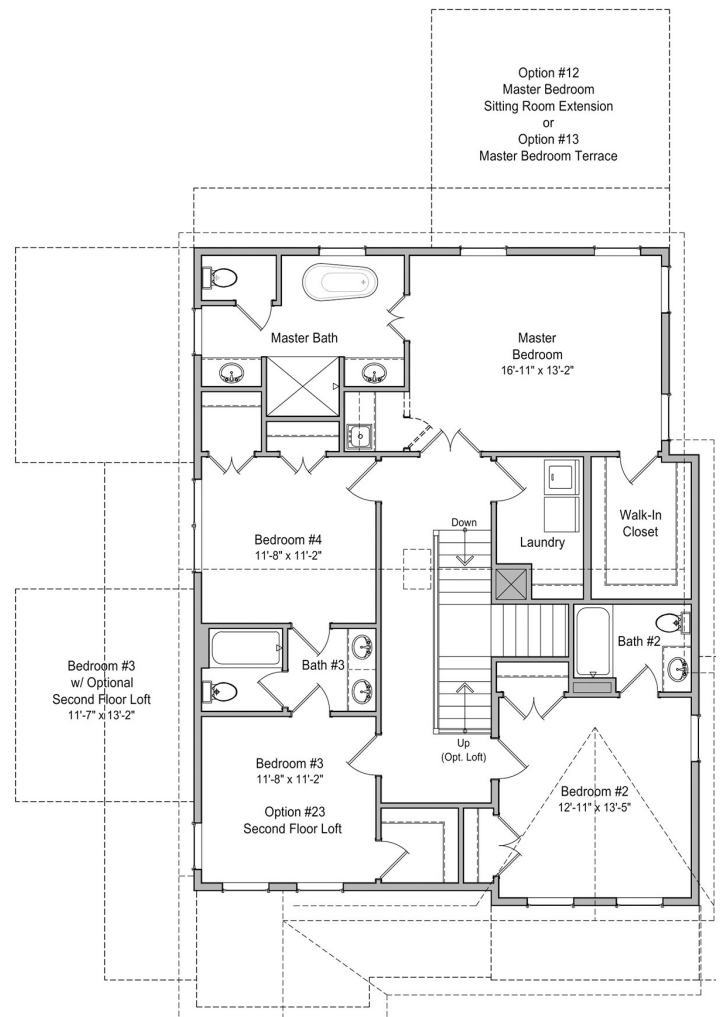
Builders National
COOPERATIVE

Plan - ACL2

Only 1st and 2nd floors shown
Additional options available



1st floor



2nd floor

Sales:

Mike Muren, Director of Operations for BNC

(301)524-4471

email: MikeMuren@buildersnationalcooperative.com

www.BuildersNationalCooperative.com

